

Model RT12E Series Rotary Torque Sensors

WHY INTERFACE RT12E SERIES TORQUE SENSORS ARE THE BEST IN CLASS:

- 2X Overload Rating
- Accuracy to 0.1%
- Dual ± 5 Volt Outputs
- Single DC Power Supply Operation
- Ferrite-free Rotary Transformer Coupling
- Calibration & Balance Free of Cable Effects
- Unexcelled Immunity to Machinery Magnetic Fields
- 15-5 PH Stainless Shaft, Splashproof & Corrosion Resistant



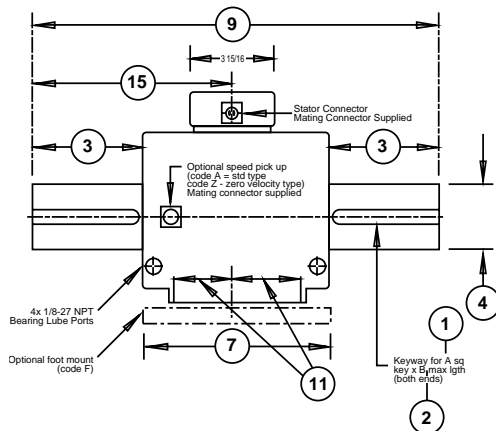
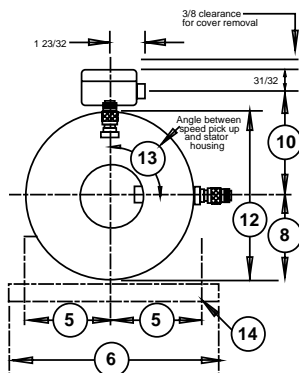
OPTIONS*

1. Enhanced Performance
2. Foot Mount (shown in photo)
3. Standard & Zero Velocity Speed Pickups
4. Noise Hardening

ACCESSORIES*

Interconnect Cables

* Please call for additional information



DIMENSIONS (INCHES)

See Drawing	CAPACITY [lb-in]								
	25 to 100	500 to 1K	1K to 2K	5K to 10K	20K to 40K	50K to 100K	200K to 375K	750K to 1.5M	3M to 4M
①	0.187	0.187	0.250	0.375	0.625	0.750	1.000	Note 3	Note 4
②	1.125	1.625	1.750	2.750	3.500	4.500	6.500	8.000	12
③	1.50	2.00	2.31	3.69	4.13	5.13	7.56	9.00	13.50
④	0.625	0.750	1.000	1.500	2.500	3.000	4.500	7.750	9.375
⑤	2.25	2.25	2.625	2.625	4.25	4.25	4.25	7.00	8.50
⑥	5.50	5.50	6.25	6.25	10.00	10.00	10.00	15.50	18.50
⑦	5.50	5.50	5.50	5.50	8.75	8.75	7.75	18.00	20.00
⑧	2.250	2.250	2.500	2.500	5.000	5.000	5.000	8.000	9.750
⑨	8.50	9.50	10.00	12.75	17.00	19.00	23.00	36.00	47.00
⑩	2 11/16	2 11/16	2 31/32	2 31/32	4 7/8	4 7/8	5 1/8	7 7/8	9 1/2
⑪	1 1/2	1 1/2	1 1/2	1 1/2	2 13/16	2 13/16	2 13/16	7 7/8	8 7/8
⑫	3 15/32	3 15/32	3 31/32	3 31/32	7 15/16	7 15/16	8 1/2	3 7/8	17
⑬	90°	90°	90°	90°	0°	0°	0°	0°	0°
⑭	0.406D	0.406D	0.406D	0.406D	Note 2	Note 2	Note 2	Note 2	Note 2
⑮	4 1/4	4 3/4	5	6 3/8	8 1/2	9 1/2	12 27/32	18	23 1/2

1. Tolerance on 4 diameter is +0.0000/-0.0005 for shaft diameters ≤ 2.5 inches and +0.000/-0.001 for shaft diameter ≥ 2.5 inches.
2. Slotted 0.531 wide by 1-1/8 long
3. Dual rectangular keyways at each end are 2" wide by 1.50" high.
4. Dual rectangular keyways at each end are 2.50" wide by 1.75" high.

Model RT12E Series Rotary Torque Sensors

SPECIFICATIONS

PARAMETERS	MODEL	
	STANDARD	ENHANCED
ACCURACY – (MAX ERROR)		
Combined Error % F.S.	≤± 0.20	≤± 0.10
Nonlinearity % F.S.	≤± 0.15	≤± 0.07
Hysteresis % F.S.	≤± 0.15	≤± 0.07
Nonrepeatability % F.S.	≤± 0.07	≤± 0.03
Stability, 6 MTHS % F.S.	≤± 0.20	≤± 0.10
Rotational Effect on Zero % F.S.	≤± 0.10	≤± 0.03
TEMPERATURE		
Zero % of F.S./deg. F.	≤± 0.003	≤± 0.0015
Span % of RDG./deg.F.	≤± 0.003	≤± 0.0015
Compensated Range	+75 to + 175 deg F	
Minimum Usable Range	-25 to + 185 deg F	
Storage Range	-65 to + 225 deg F	
ELECTRICAL		
Fully bi-directional, dual output with common characteristics, as follows		
Clockwise (CW) Torque ¹	+5 VOLTS	
Counterclockwise (CCW) Torque ¹	-5 VOLTS	
Minimum Resistive Load	10KΩ	
Maximum Capacitive Load	0.05 μF	
Overtime % of F.S.	± 33	
Measurement Bandwidth: (Both outputs are present simultaneously)		
High Frequency Output	dc to 500 Hz	
Low Frequency Output	dc to 1 Hz	
Output Noise (rms % of F.S.)	0.10 at 500 Hz Output, 0.01 at 1 Hz Output	
Zero Control Range	± 5% of F.S., nominal	
Span Control Range	± 5% of F.S., nominal	
Supply Voltage	10.5 to 24 Volts dc nominal	
Supply Current	85mA, nominal	

TORQUE RANGE		TORQUE OVERLOAD		SPEED RATING	SHAFT STIFFNESS	ROTATING INERTIA	MAX. WT.
[lb-in]	[n-m]	[lb-in]	[n-m]	[rpm]	[lb-in/radian]	[oz-in sec ²]	[lbs]
25	2.82	50	5.64	0 to ± 15,000	2,150	0.034	6
50	5.65	100	11.3	0 to ± 15,000	6,030	0.034	6
100	11.3	200	22.6	0 to ± 15,000	14,700	0.034	6
500	56.5	1,000	113	0 to ± 15,000	57,900	0.035	7
1K	113	2,000	226	0 to ± 15,000	70,100	0.035	7
1K	113	2,000	226	0 to ± 8,500	197,000	0.15	11
2K	226	4,000	452	0 to ± 8,500	260,000	0.15	11
5K	565	10,000	1,130	0 to ± 8,500	580,000	0.19	14
10K	1,130	20,000	2,260	0 to ± 8,500	605,000	0.19	14
20K	2,260	40,000	4,520	0 to ± 8,000	1,800,000	2.3	105
40K	4,520	80,000	9,040	0 to ± 8,000	2,700,000	2.4	105
50K	5,650	100,000	11,300	0 to ± 6,000	5,700,000	2.8	115
100K	11,300	200,000	22,600	0 to ± 6,000	7,100,000	3	115
200K	22,600	400,000	45,200	0 to ± 3,600	29,000,000	11	150
375K	42,400	750,000	84,800	0 to ± 3,600	38,000,000	11.7	150
750K	84,700	1,500,000	169,000	0 to ± 1,800	115,000,000	205	775
1.5M	169,000	3,000,000	339,000	0 to ± 1,800	136,000,000	212	790
3M	339,000	6,000,000	678,000	0 to ± 1,200	221,000,000	567	1455
4M	452,000	7,350,000	830,000	0 to ± 1,200	227,000,000	582	1475

*Stiffness is conservatively rated from flange face-to-flange face.

NOTES: 1. CW torque causes the torquemeter shaft to turn clockwise when viewed from the drive end.
CCW torque (counterclockwise) causes the opposite rotation.