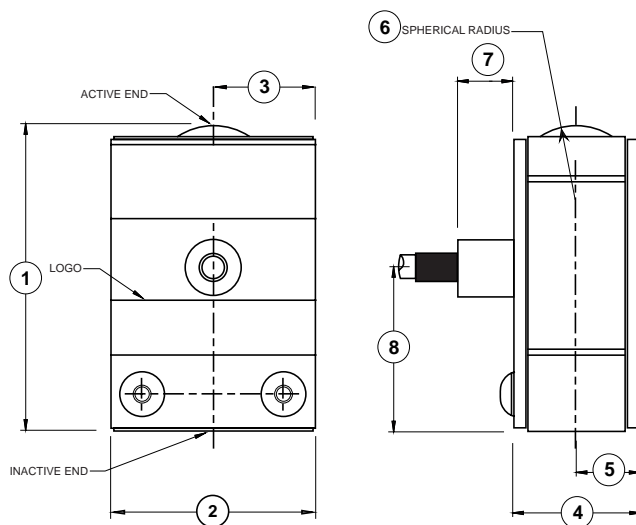


Model MCC Series Miniature Compression Load Cell

Why INTERFACE MCC Series Miniature Compression Load Cell are the best in class:

- Proprietary Interface temperature compensated strain gages
- Small Size- Approx. 1 1/8 x 3/4 x 1/2 in.
- Integral Load Button
- Excellent Accuracy
- Low Deflection



DIMENSIONS

See Drawing	CAPACITY (lbf)	
	inch	(mm)
①	1.12	(28.3)
②	0.77	(19.3)
③	0.37	(9.4)
④	0.47	(12.0)
⑤	0.24	(6.1)
⑥	0.25	(6.4)
⑦	0.20	(5.1)
⑧	0.60	(15.2)

SPECIFICATIONS

Standard Capacity (N)500
Equivalent (lbf).....112

ACCURACY – (MAX ERROR)

Nonlinearity-% FS± 0.10
Hysteresis-% FS±0.10
Nonrepeatability-% RO±0.05
Creep, in 20 min.-%±0.05

TEMPERATURE

Compensated Range-°F15 to 115
Compensated Range-°C-10 to 45
Operating Range-°F-65 to 200
Operating Range-°C-55 to 90
Effect on Zero-% RO/100F'±0.50
Effect on Output-%/100F'±0.10

ELECTRICAL

Rated Output-mV/V (Nominal)2.20±0.20
Zero Balance-% RO±2.0
Input Resistance-Ohms350 + 35/-3.5
Output Resistance-Ohms350 ± 3.5
Insulation Resistance-Megohm>5000
Excitation, nominal-VDC.....10
Excitation, maximum-VDC12

MECHANICAL

Overload:
-safe axial-% cap±150
-ultimate axial-% cap±400
-safe side load-% cap40, any direction
-safe load axis moment-% cap x1 in.40
Deflection at capacity-inch0.001
Weight with cable-lb0.05
Cable length-feet3.3
Flexure MaterialAluminum